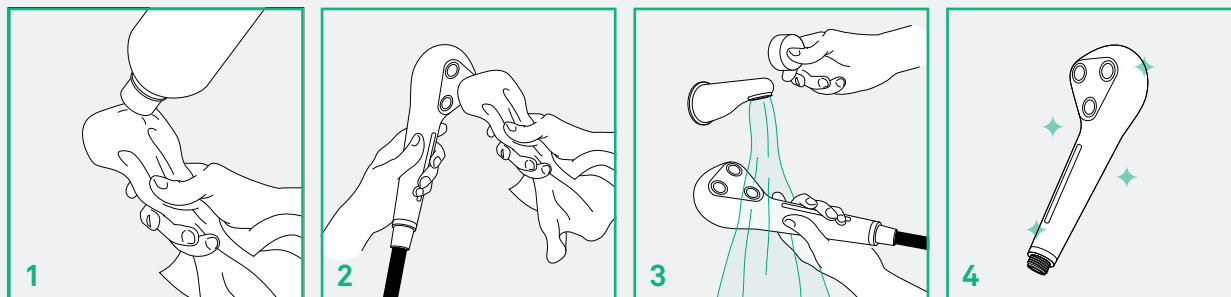


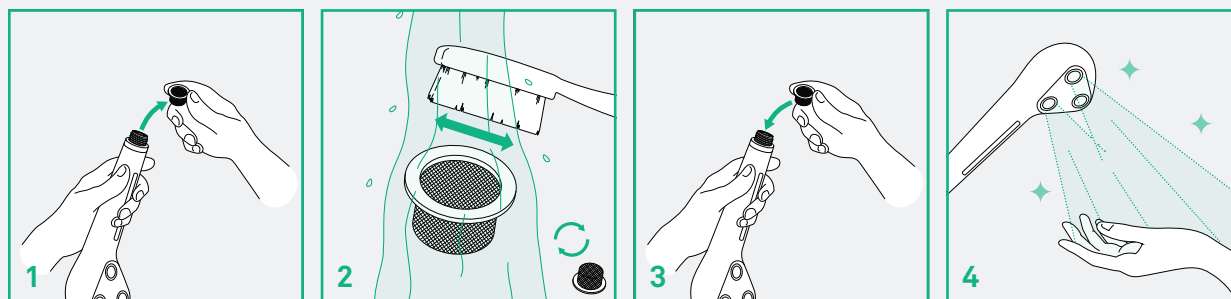
# GS MAINTENANCE INSTRUCTIONS

## Cleaning my GS:



- 1 - Place cleaning product on a cloth
- 2 - Rub the showerhead gently.
- 3 - Rinse with water.
- 4 - The GS is clean!

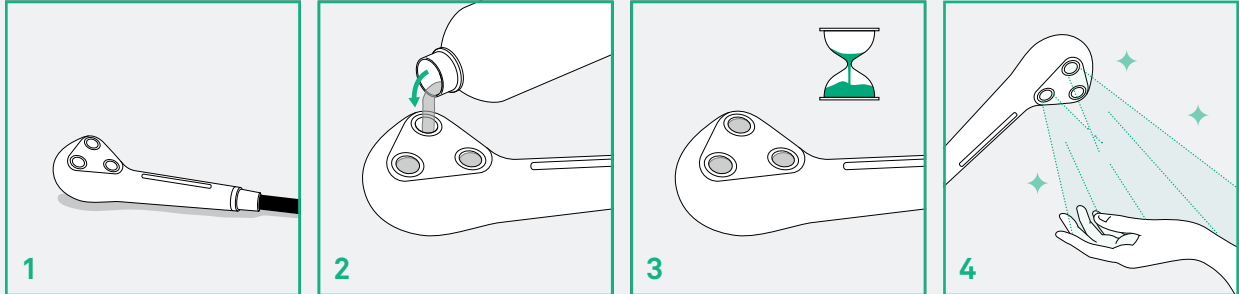
## Cleaning the filter of my GS:



- 1 - Remove the filter.
- 2 - Apply cleaning product and remove all dirt with a soft brush and water.
- 3 - Place the filter again inside the showerhead.
- 4 - The GS is clean!

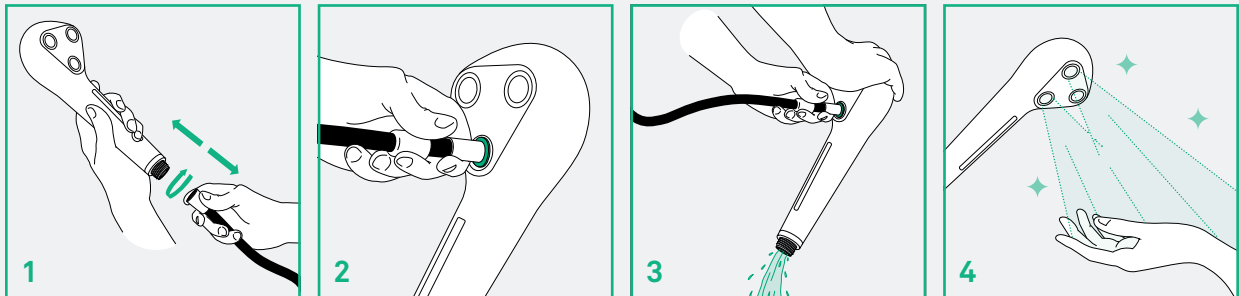
# GS MAINTENANCE INSTRUCTIONS

## Removing limestone from my GS:



- 1 - Place your product face up.
- 2 - Fill the cartridges with vinegar.
- 3 - Let the vinegar sit for a couple of hours.
- 4 - The GS is clean!

## Unclogging my GS:



- 1 - Remove the GS from the hose.
- 2 - Join the end of the hose with one of the cartridges of the GS.
- 3 - Turn on your faucet and block the other two cartridges with the help of your hand until the water comes out from the lower end.
- 4 - The GS is clean!